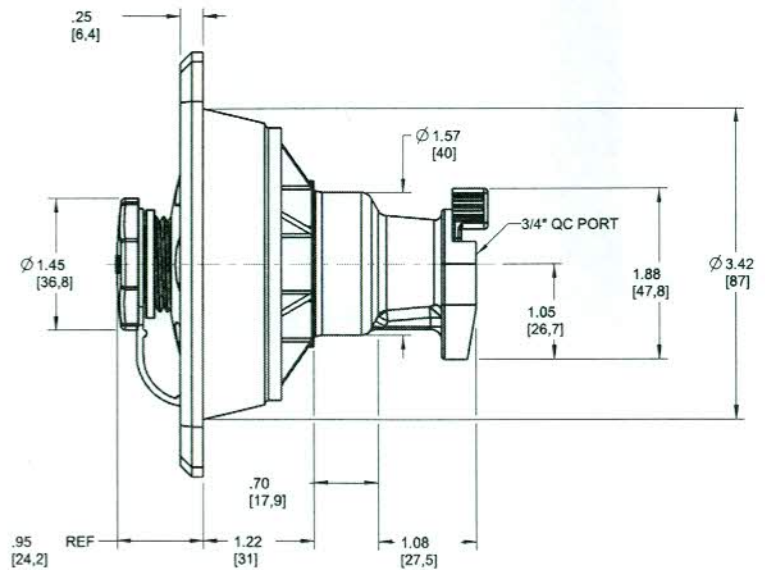
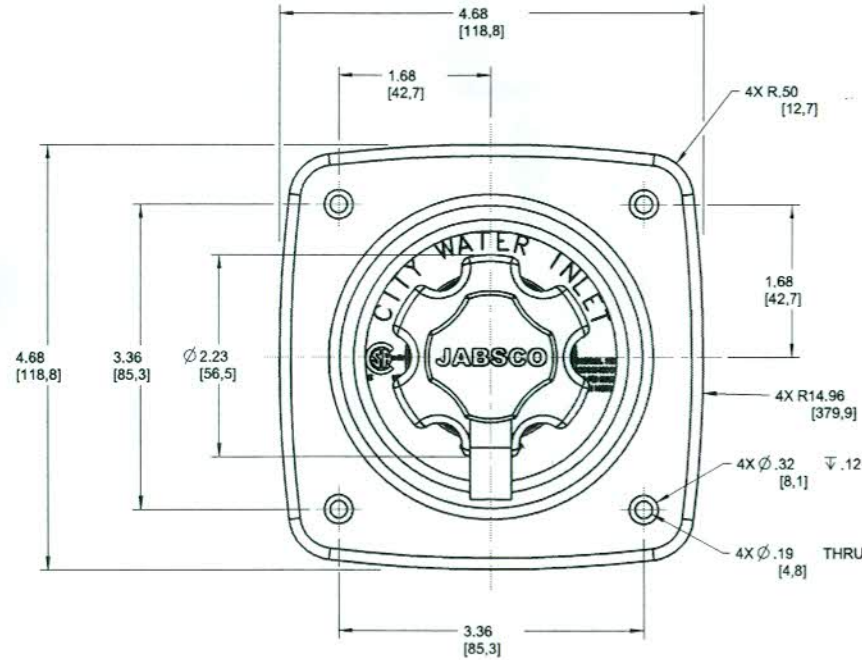
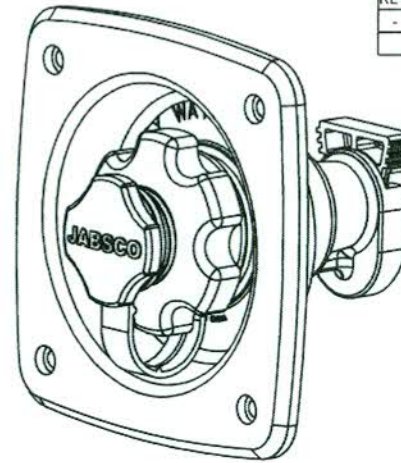


NOTES UNLESS OTHERWISE SPECIFIED:

1. ALL DIMENSIONS ARE IN INCHES[MM]
2. ALL DIMENSIONS ARE FOR REFERENCE ONLY
3. SPECIFICATIONS:
 PRESSURE: 150 PSI (10 BAR) MAX. INLET PRESSURE
 REGULATED PRESSURE: 45 PSI (3.1 BAR) OUTPUT
 LISTINGS: NSF LISTED STANDARD 18, POTABLE WATER
 WORKING TEMPERATURE: 33-150 °F (1-65 °C)
4. PLASTICS: POM
5. DIAPHRAGM: SANTOPRENE
6. O-RING SEAL: EPDM
7. CHECK VALVES: EPDM

REVISIONS				
REV	ECN	DESCRIPTION	BY	DATE
-	-	FOR REFERENCE ONLY	MLC	02/17/16



xylem

UNLESS OTHERWISE SPECIFIED				APPROVALS		DATE	MATERIAL	
DIMENSIONS AND TOLERANCES ARE AS PER ASME Y14.5M (LATEST REV.) PRIMARY DIMENSIONS ARE IN INCHES DIMENSIONS IN () ARE MILLIMETERS INSPECTION DIMENSIONS INDICATED WITH \square				DRAWN BY	MLC	02/17/16	-	
				CHECKED BY	RV	02/16/16		
				APPROVED BY	CB	02/16/16		
THIS DOCUMENT CONTAINS PROPRIETARY INFORMATION OF XYLEM. THIS DOCUMENT IS ISSUED IN STRICT CONFIDENCE AND SHALL NOT BE DISCLOSED TO A THIRD PARTY OR USED FOR MANUFACTURE, PRODUCTION OR PROCUREMENT WITHOUT EXPRESS WRITTEN PERMISSION XYLEM.				TOLERANCES ARE		SCALE: 1:1	TITLE	
				FRACTIONS	1/16	1/32	SHEET 1 OF 1	WATER PRESSURE REGULATOR ASSY WALL MOUNTING, 45 PSI
				DECIMALS	0.0005-0.001	0.001	DWG. NO.	
THE COMPONENT, PART OF ASSEMBLY DESCRIBED IN THIS DOCUMENT MUST COMPLY WITH THE LATEST REVISION OF THE FOLLOWING DJ DIRECTIVES, UNLESS OTHERWISE SPECIFIED: DIRECTIVE 90/269/EEC AND 93/42/EEC.				DECIMALS	0.0005-0.001	0.001	C 444121045SA	
				ANGULAR SURFACES	0.1°	0.1°		-