

3. APPROX. WT. = .732 LB [.332 Kg]
 2. INSTALL SPRING WASHER SO CONCAVE SURFACE FACES STARWHEEL.
 1. STAKE ALL 3 RIVETS SQUARELY AND TIGHTLY.

NOTES

RD# 08046

UNLESS OTHERWISE SPECIFIED DIMENSIONS ARE IN INCHES.
 TOLERANCES ARE:
 DECIMALS .XX \pm .020 [.50 mm]
 .XXX \pm .010 [.25 mm]
 FRACTION \pm .040 [1.00 mm]
 ANGLES \pm 1 DEG.

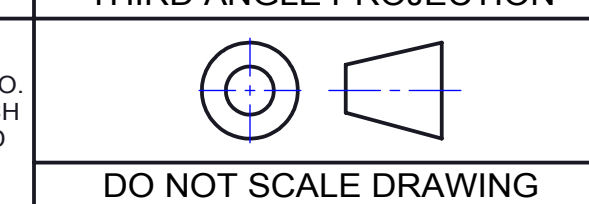
DRAWN	DLJ	07-17-08
ENG. MGR.		
Q.A. MGR.		
THIRD ANGLE PROJECTION		

A. L. HANSEN MANUFACTURING
 701 N. PERSHING ROAD
 WAUKEGAN, ILLINOIS 60085

DOOR SUPPORT, 6, AA, ZN

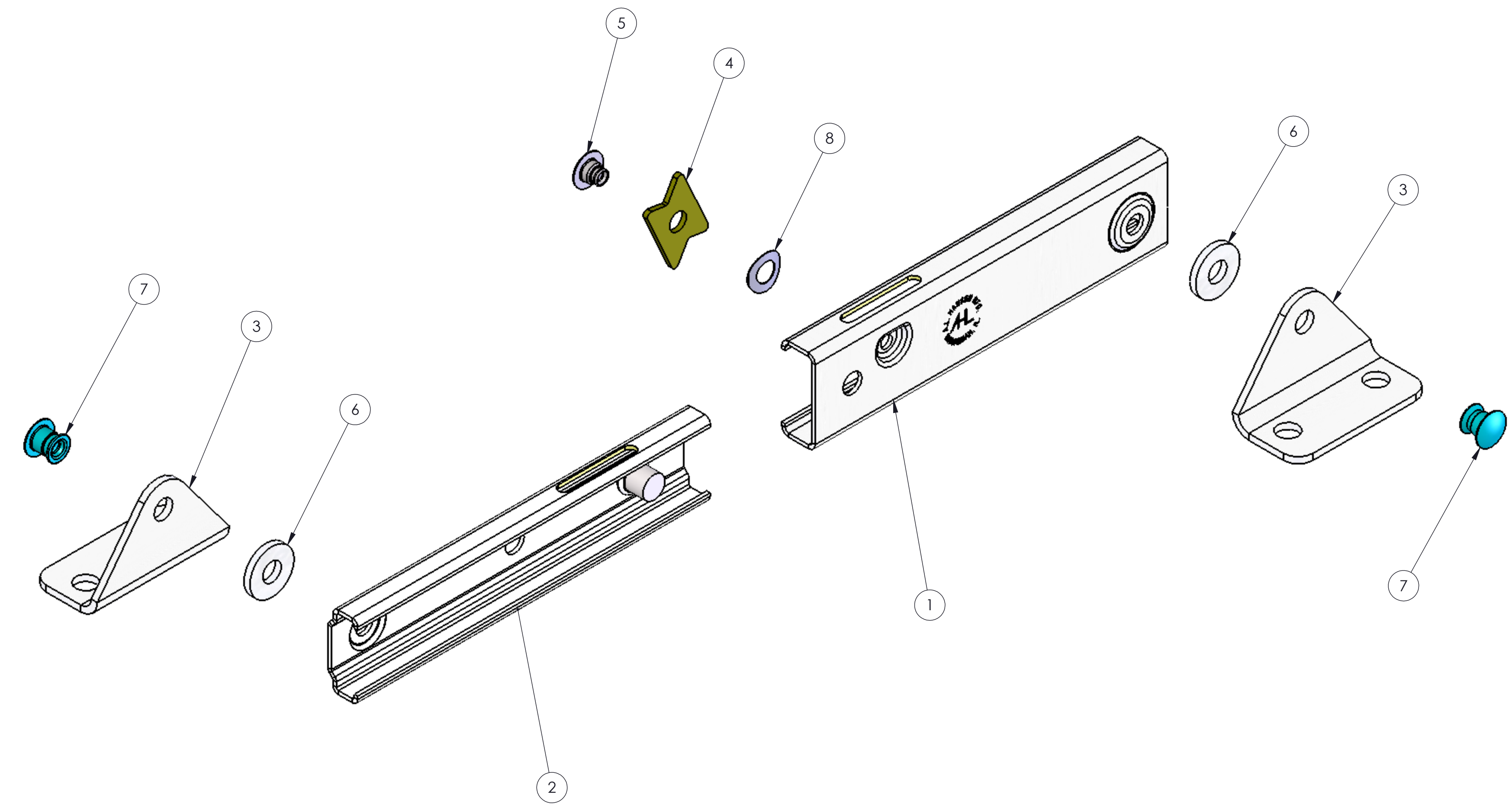
REV	DESCRIPTION	DATE	BY
B	ECN#01770; SHEET 2, ITEM 2 WAS ZN-373002	06/27/13	RR
A	ER-0736; INITIAL RELEASE	7/17/08	DJ
REVISION			

THIS DRAWING IS PROPRIETARY PROPERTY OF A.L. HANSEN MFG. CO. DISCLOSED IN CONFIDENCE, WHICH MAY NOT BE USED OR DISCLOSED WITHOUT PERMISSION.


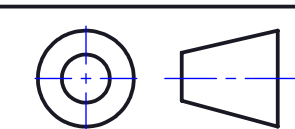


SIZE	PART NUMBER	REV.
D	DS6AAZN	B
SCALE 1:1	SOFTWARE SolidWorks	SHEET 1 OF 2

ITEM NO.	QTY	PART NUMBER	DESCRIPTION
1	1	ZN-373004	6" OS CHANNEL, STANDARD, ZN
2	1	ZN-973002-R	6" INSIDE CHANNEL AND REINFORCEMENT S/A, ZN
3	2	ZN-273039	FLANGE, 90 DEG, "A", ZN
4	1	ZN-273070	STARWHEEL, ZN
5	1	ZN-273066	RIVET, STAR WHEEL, ZN
6	2	273074	WASHER, NYLON, .75 x .318 x .100
7	2	ZN-273062	RIVET, SHOULDER, FLANGE, ZN
8	1	273075	SPRING WASHER



RD# 08046

UNLESS OTHERWISE SPECIFIED DIMENSIONS ARE IN INCHES. TOLERANCES ARE: DECIMALS .XX ± .020 [.50 mm] .XXX ± .010 [.25 mm] FRACTION ± .040 [1.00 mm] ANGLES ± 1 DEG.	DRAWN DLJ 07-17-08	 701 N. PERSHING ROAD WAUKEGAN, ILLINOIS 60085
	ENG. MGR.	
	Q.A. MGR.	THIRD ANGLE PROJECTION 
THIS DRAWING IS PROPRIETARY PROPERTY OF A.L. HANSEN MFG. CO. DISCLOSED IN CONFIDENCE, WHICH MAY NOT BE USED OR DISCLOSED WITHOUT PERMISSION.	DO NOT SCALE DRAWING	SCALE 1:1 SOFTWARE SolidWorks SHEET 2 OF 2